



## PolyPrime

### PVC Vinyl Windows

860-848-9258

sales@alltimemfg.com

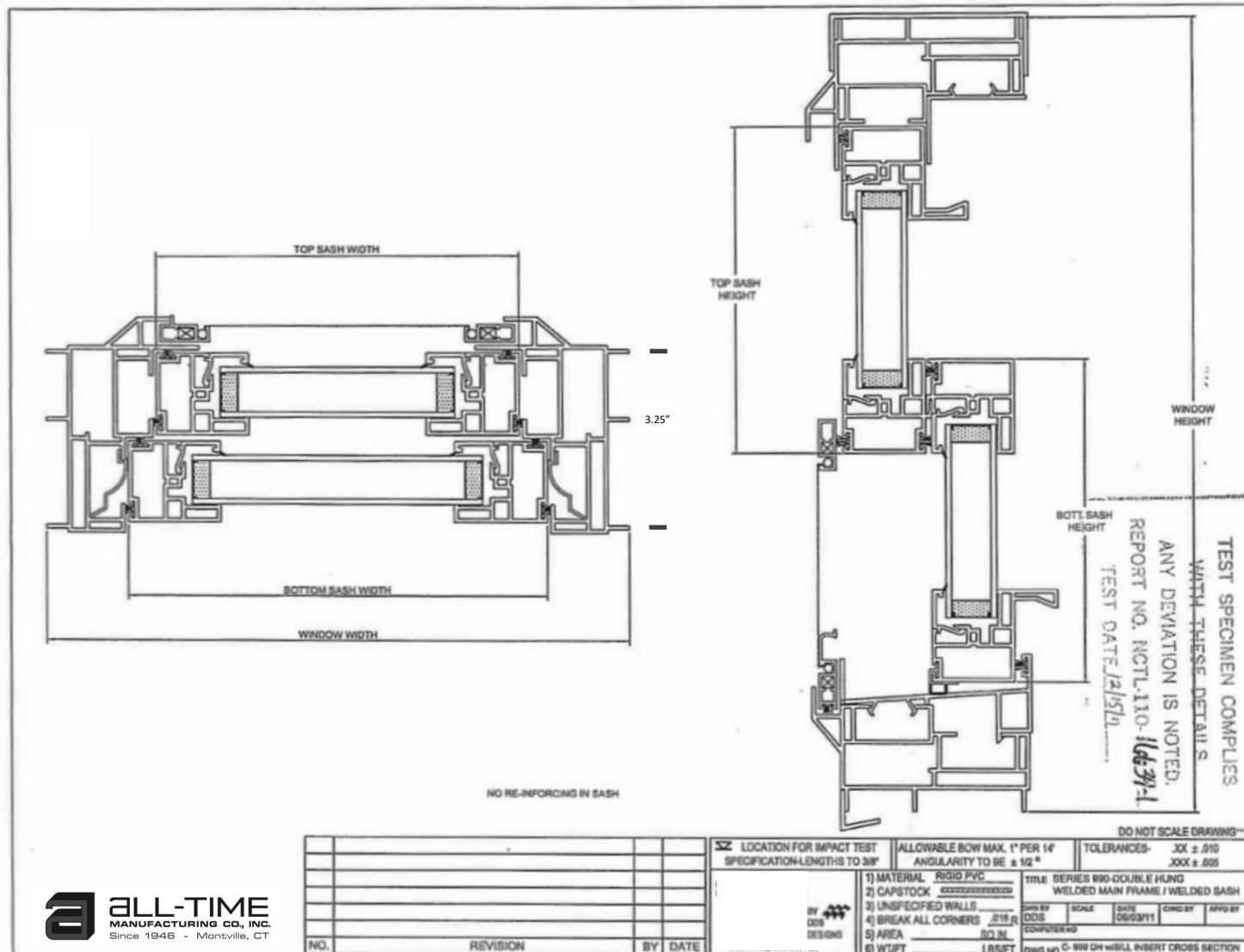
3900 Replacement, Foam Filled,  
3990 New Construction Frame  
Options Pictured Below:

Mid-Rail Reinforcement can be  
added on larger sizes for structural  
upgrade.

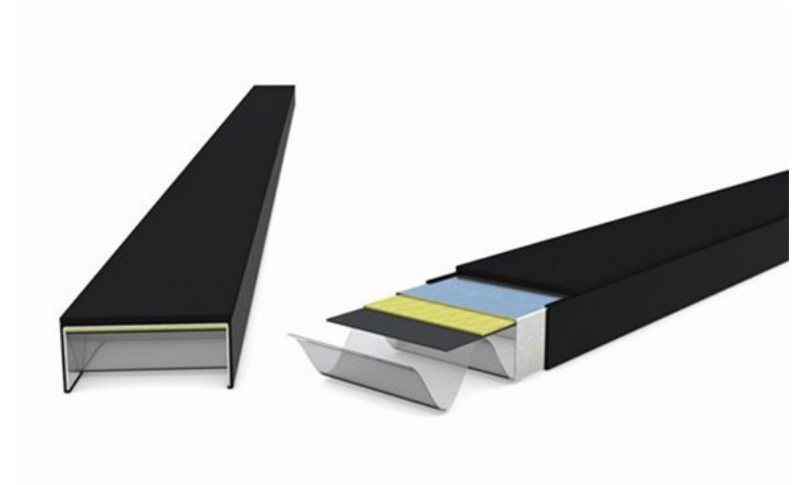
WINDOW PERFORMANCE DATA					
Model	XL 3900 / 3990	XL 3900 / 3990	XL 3900 / 3990	XL3710	XL 3700
Type	Double Hung Fully Welded	Double Hung Fully Welded	Double Hung Fully Welded	Horizontal Slider Fully Welded	Double Hung Weld/Mech
Material	Vinyl	Vinyl	Vinyl	Vinyl	Vinyl
Structural	R-35—R-PG 50 DP 50 w/ reinforc	R-35—R-PG 50 DP 50 w/ reinforc	R-35—R-PG 50 DP 50 w/ reinforc	R-30—R-35	R-30—R-35
U-value <u>Overall Window</u>	0.28 - w/ Argon 0.24 w/ Krypton	0.22 +/- w/ Argon 0.18 w/ Krypton	0.11 Vacuum *	0.28 w/ Argon 0.24 w/ Krypton	0.29 w/ Argon
Glass Unit Type	Dual Pane, Low-e	<u>Triple</u> Pane, Low-e	Dual Pane, Low-e	Dual Pane, Low-e	Dual Pane, Low-e
U-value C-O-G	0.22— w/ Argon				0.22
Solar HGC	0.36 (No grids)	0.36		0.26	0.26
Air Infiltration	0.18	0.18	0.18	0.20	
Energy Star 7.0 Equiv.	w/ Krypton	w/ Argon*	Yes		
Other window models and other glass variations testing may be available. * Glass units estimated Window U value					



Polyprime Vinyl Windows XL3900-3990



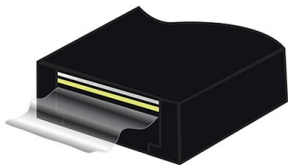
**ALL-TIME**  
MANUFACTURING CO., INC.  
Since 1946 • Montville, CT



Duralite® from Quanex is a warm-edge spacer system used in the production of dual and triple pane insulating glass (IG) units. Windows made with Duralite spacer systems have a smooth surface appearance, superior argon gas retention and a warmer edge of glass, adding comfort and energy efficiency to homes!

## TECHNICAL DATA

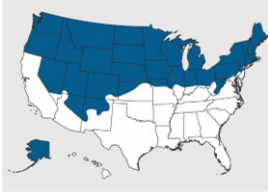
- Composite laminating technology
- Polycarbonate spacer element (nonmetal)
- Black or gray sightline
- Proven adhesive technology
- Smooth surface appearance
- Superior argon gas retention





## ClimaGuard 71/38

Climate control for hot summers and cold winters



### Low-E glass that cools in the summer and warms in the winter.

Maintaining a comfortable indoor environment is a challenge when temperatures fluctuate, sometimes dramatically, throughout the day, between seasons, and across climate zones. ClimaGuard 71/38 from Guardian is glass for all seasons. It insulates in the winter, blocks heat in the summer, and makes homes more comfortable and energy efficient all year long.

#### *Warm and cozy in the winter*

Choosing ClimaGuard 71/38 can significantly lower heating energy costs and improve insulating value by as much as 50% over standard clear glass. This means that less interior heat is lost through windows and room-side glass temperatures stay warm, helping to maintain a uniform comfort level throughout the house.

#### *Cool and comfy in the summer*

With ClimaGuard 71/38, solar heat gain and damaging radiation can be significantly reduced without sacrificing clear views and daylight. ClimaGuard 71/38 blocks up to 50% more unwanted solar energy than standard clear glass, and up to 40% more than even dark tinted glass. This results in lower air conditioning expenses and a more comfortable living environment.

#### *Blocks harmful UV light*

ClimaGuard 71/38 has another benefit besides comfort. Compared to standard clear glass, it blocks nearly twice as much harmful UV light to extend the life of woodwork, carpets and furnishings while still allowing natural sunlight to brighten the home.

### ClimaGuard 71/38 at a glance

- Helps meet ENERGY STAR® requirements.
- Brightens homes with 71% of the sun's visible light.
- Helps homeowners save more on utility bills all year long.
- Attractive, neutral appearance to enhance the beauty of any home.
- A heat-treatable version is also available.
- Easy to fabricate and available from all Guardian U.S. coating facilities.
- Available in full truckloads, partial truckloads or case quantities.