

PolyPrime
Industry Leading
PVC Vinyl Windows

860-848-9258

sales@alltimemfg.com

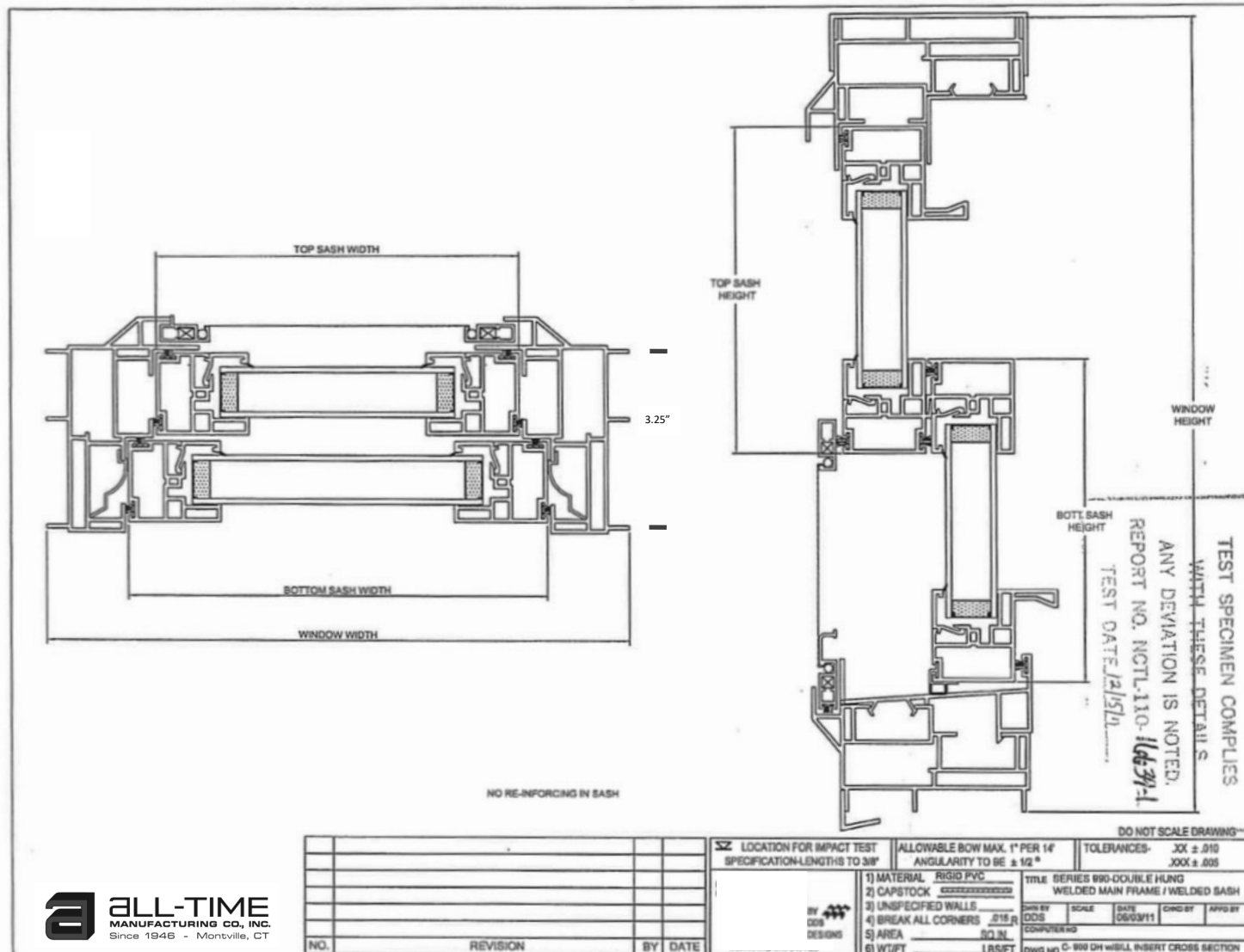
3900 Replacement, Foam Filled,
3990 New Construction Frame
Options Pictured Below:

Mid-Rail Reinforcement can be
added on larger sizes for structural
upgrade.

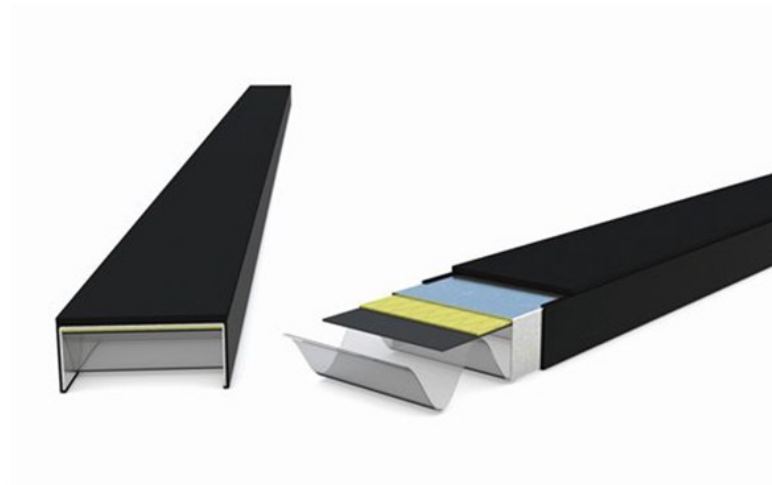
WINDOW PERFORMANCE DATA					
Model	XL 3900 / 3990	XL 3900 / 3990	XL 3900 / 3990	XL3710	XL 3700
Type	Double Hung Fully Welded	Double Hung Fully Welded	Double Hung Fully Welded	Horizontal Slider Fully Welded	Double Hung Weld/Mech
Material	Vinyl	Vinyl	Vinyl	Vinyl	Vinyl
Structural	R-35—R-PG 50 DP 50 w/ reinforc	R-35—R-PG 50 DP 50 w/ reinforc	R-35—R-PG 50 DP 50 w/ reinforc	R-30 —R-35	R-30 —R-35
U-value <u>Overall Window</u>	0.28 - w/ Argon 0.24 w/ Krypton	0.22 +/- w/ Argon 0.18 w/ Krypton	0.11 Vacuum *	0.28 w/ Argon 0.24 w/ Krypton	0.29 w/ Argon
Glass Unit Type	Dual Pane, Low-e	<u>Triple</u> Pane, Low-e	Dual Pane, Low-e	Dual Pane, Low-e	Dual Pane, Low-e
U-value C-O-G	0.22— w/ Argon				0.22
Solar HGC	0.36 (No grids)	0.36		0.26	0.26
Air Infiltration	0.18	0.18	0.18	0.20	
Energy Star 7.0 Equiv.	w/ Krypton	w/ Argon*	Yes		
Other window models and other glass variations testing may be available. * Glass units estimated Window U value					



Polyprime Vinyl Windows XL3900-3990



ALL-TIME
MANUFACTURING CO., INC.
Since 1948 • Montville, CT



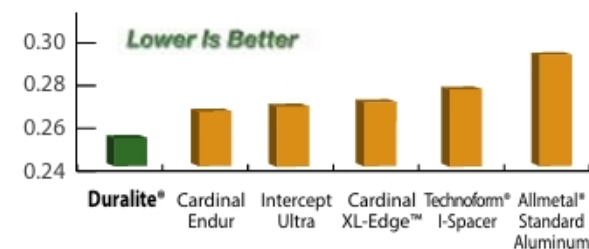
Duralite® from Quanex is a warm-edge spacer system used in the production of dual and triple pane insulating glass (IG) units. Windows made with Duralite spacer systems have a smooth surface appearance, superior argon gas retention and a warmer edge of glass, adding comfort and energy efficiency to homes!

TECHNICAL DATA

- Composite laminating technology
- Polycarbonate spacer element (nonmetal)
- Black or gray sightline
- Proven adhesive technology
- Smooth surface appearance
- Superior argon gas retention



DURALITE IMPROVES THE TOTAL WINDOW U-FACTOR

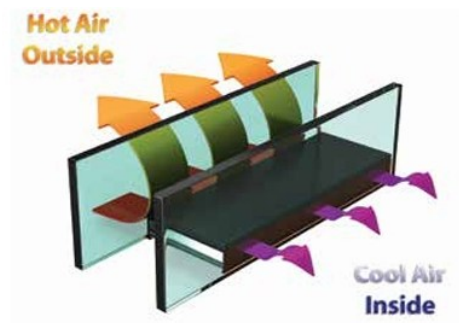


Best-in-class* thermal insulating performance

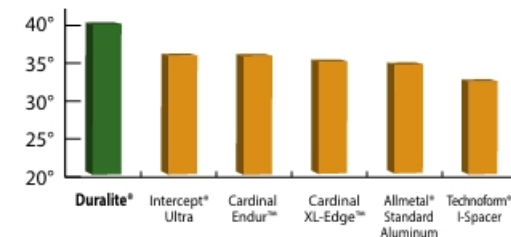
Guardian ClimaGuard 70 glass helps support consistent comfort through hot and cold weather extremes and energy efficiency in every season throughout the Northern and North-Central regions. In addition to its insulating performance, this glass also transmits abundant light for a clean, neutral look that brightens interiors and opens views to the exterior.

Thanks to its advanced performance, ClimaGuard 70 can help window manufacturers meet ENERGY STAR V7 requirements. In the North-Central U.S. region, this is accomplished by pairing ClimaGuard 70 low-E coating on surface #2 with ClimaGuard IS-20 low-E coating on surface #4 of a double-pane insulated glass unit (IGU). In the Northern region, ClimaGuard 70 can be part of a triple-pane IGU to meet these requirements.

**Among high-VLT products (as of this publication). High-VLT refers to products with visible light transmission between 66–80%.*



TEMPERATURE OF THE GLASS



Warmer glass makes you feel more comfortable

GUARDIAN CLIMAGUARD 70 LOW-E GLASS



Double Glazed



GLASS: Guardian Clear Glass (North America) Glass, 1/8" (3mm) (2-ClimaGuard® 70 (North America))

GAP: 10% Air, 90% Argon 12.7mm

GLASS: Guardian Clear Glass (North America) Glass, 1/8" (3mm)

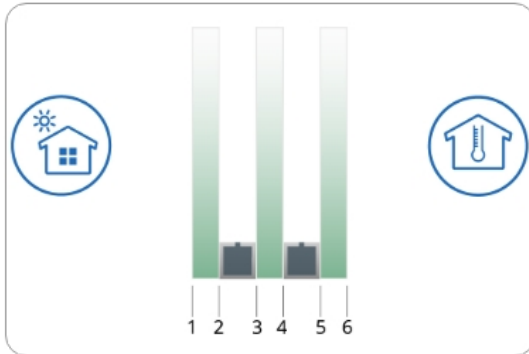
Calculated Values are in accordance with NFRC2010

Performance Values

VISIBLE LIGHT	Transmittance (τ_v)	69 %
	Reflectance outside (ρ_v)	15 %
	Reflectance inside (ρ_v)	16 %
	General Color Rendering Index (CRI)	95.4
ULTRAVIOLET	Transmittance UV (τ_{uv})	20 %
SOLAR ENERGY	Solar transmittance (τ_e)	32 %
	Reflectance outside (ρ_e)	42 %
	Reflectance inside (ρ_e)	46 %
	Solar absorptance (α_e)	26 %
	Solar Heat Gain Coefficient (SHGC)	0.35
	Shading Coefficient (sc)	0.40
THERMAL PROPERTIES	Winter night U-Value	0.242 Btu/hr·ft²·F
	Summer day U-value	0.213 Btu/hr·ft²·F
LIGHT TO SOLAR GAIN	Light to Solar Gain (LSG)	1.98

GUARDIAN CLIMAGUARD 70 LOW-E GLASS

Triple Glazed



GLASS: Guardian Clear Glass (North America) Glass, 1/8" (3mm) (2-ClimaGuard® 70 (North America))

GAP: 10% Air, 90% Argon 12.7mm

GLASS: Guardian Clear Glass (North America) Glass, 1/8" (3mm)

GAP: 10% Air, 90% Argon 12.7mm

GLASS: Guardian Clear Glass (North America) Glass, 1/8" (3mm)

Calculated Values are in accordance with NFRC2010

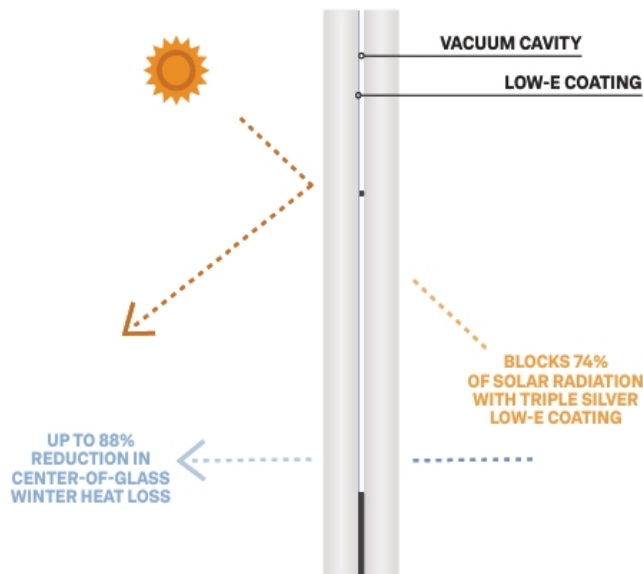
Performance Values

VISIBLE LIGHT	Transmittance (tv)	63 %
	Reflectance outside (pv)	19 %
	Reflectance inside (pv)	22 %
	General Color Rendering Index (CRI)	94.7
ULTRAVIOLET	Transmittance UV (tuv)	17 %
SOLAR ENERGY	Solar transmittance (te)	29 %
	Reflectance outside (pe)	44 %
	Reflectance inside (pe)	42 %
	Solar absorptance (ae)	27 %
	Solar Heat Gain Coefficient (SHGC)	0.32
	Shading Coefficient (sc)	0.37
THERMAL PROPERTIES	Winter night U-Value	0.182 Btu/hr·ft²·F
	Summer day U-value	0.176 Btu/hr·ft²·F
LIGHT TO SOLAR GAIN	Light to Solar Gain (LSG)	1.96

ENTHERMAL. 10mm. R18.

AT THE CORE OF LUXWALL IS ENTHERMAL

With a U-Factor of 0.056, a 20-year warranty, and fully tempered strength, **Enthermal™** delivers superior thermal performance, energy savings, enhanced comfort, and acoustic control. Its ultra-slim 8-mm, 10-mm, and 12-mm profiles offer endless design options from glass-only retrofits to one-inch insulating glass units with a U-Factor of 0.043. Enthermal delivers exceptional condensation resistance, lower embodied carbon, and sleek modern aesthetics—without compromise.



0.056
U-Factor
(BTU/hr-ft²-F)

64%
Visible
Transmittance (VLT)

0.26
Solar Heat
Gain Coefficient (SHGC)

77+
Condensation
Resistance Factor

Vacuum Insulated Glass

Delivering Unmatched Results in Vinyl & Aluminum Windows!

Can deliver between R-18 and R-23 thermal insulation – outperforming current glass and window product offerings by up to 5X!

10mm vig available in ***Polyprime*** vinyl DH & Horz Slider, and ***Thermalprime*** commercial aluminum in SH, DH among others.

Contact; sales@alltimemfg.com

1. Comparing to Double Pane Clear for Glass-Only Retrofit • 2. Center of Glass U-Factor comparison of Enthermal Triple Silver on surface 2 (U-Factor 0.056) vs. Double Pane IG, Air Fill (U-Factor 0.473).